



2018 PRODUCT CATALOG

Enclosures

Power

Cooling

Accessories

Custom



Our Enclosures Are Anything But Standard

Martin Enclosures began designing and manufacturing server racks, enclosures, power, and cooling solutions in 1998. Martin designs and builds top quality off the shelf, modified standard, and custom rack mount enclosures, server racks and cabinets for a wide variety of applications. Data center and facilities managers with unique requirements rely on us to supply non-standard or custom equipment. Unlike other suppliers who offer only pre-made stock products, we design and manufacture custom server racks, enclosures, power and cooling solutions to meet our customers' needs. Our philosophy is based on continuous improvement, manufacturing excellence, and uncompromising customer satisfaction. We use only the highest quality materials and take pride in producing a quality product that bears the Martin name.



Martin Enclosures Product Catalog

Table of Contents

Racks and Enclosures

Standard Open-Frame Racks.	5-7
MSR-Series Server Rack.	8-9
MET-Series Network Rack.	10-11
MPR-Series Server Rack.	12-13
MAV-Series AV Rack.	14-15
MSV-Series Pull Out and Swivel Rack.	16-17
Colocation Enclosures.	18
Double-Wide Enclosures.	19
Wall Mount Racks.	20
Table Top Enclosures.	21
EMI/RFI Shielded Enclosures.	22
Seismic Server Racks.	23
Fiber Frame Racks.	24
Custom Server Racks & Enclosures.	25

Power Distribution

Vertical PDUs.	27
Rack PDUs.	28-29
Power Distribution Enclosures (PDE).	30-31
Power Accessories.	32

Cooling

In-Row Heat Exchanger.	34-35
Air Conditioned Enclosures.	36-37
Cooling Accessories.	38

Rack Accessories and Options

Doors.	40
Door Locks.	41
Cable Management.	42-43
Panels.	44-45
Shelves & Drawers.	46-47
Additional Accessories.	48-49

Martin Services and Facility **50-51**

Performance. Versatility. Quality



Martin Enclosures designs and manufactures server racks, enclosures, power and cooling solutions for a wide variety of applications. Our core markets include Data Center, IT & Networking, Telecommunications, Broadcast/AV, Medical, and OEM. With the demands and challenges that face the IT industry, Martin has designed high performance versatile rack solutions to meet your needs. Our racks and enclosures provide a flexible platform to mount your equipment and supporting accessories.

We offer standard, modified standard, and custom rack, power, and cooling solutions. Martin Enclosures takes pride in developing solutions for progressive applications that require the highest quality and most advanced features. We intend to meet and exceed customer expectations.

Our high quality server racks and rack mount enclosures provide security and protection for critical equipment. Racks are the building blocks of your IT infrastructure and it is crucial to choose a solution that will allow you to grow. Martin Enclosures' server racks are the most versatile in the industry. We strive to offer our customers the highest quality product and superior customer service.

Standard Open-Frame Rack

Martin's signature patented frame is a rugged unique design constructed out of our aluminum extrusion. The frame design was engineered to be versatile for a wide variety of applications, allowing the customer to choose virtually any size. The frame features fully welded aluminum extrusion to ensure the support of your critical equipment. Our signature frame is the foundation for many of our racks and enclosures including the MSR-Series, MET-Series, MSV-Series, Power Distribution Enclosures (PDE), and many more.

What Size Rack is Right for You?

For optimal results, select a server rack with enough internal space to house your servers as well as other accessories. For example, you want to make sure you leave room for power management devices, cable management, and environmental monitoring devices. If you are planning on expanding your set up in the future, ensure there will be enough space to contain additional equipment. Rack mount equipment is measured in "Rack Units". One rack unit is equal to 1.75" height. Standard cabinets are 42 rack units, or 42U. Be sure that the rack will fit in the space given.

Features

Fully Welded Patented Aluminum Extrusion Frame

- Lightweight 6063 T5 welded rugged frame
- Dynamic weight load 2,500 lbs; Static weight load 3,000 lbs
- Available in many standard heights, widths, and depths
- Textured powder coat finish
- US patent # 6,179,398

3 Pairs of Fully Adjustable Vertical Mounting Rails

- 19", 23", 24" and 28" Rack mount available
- Standard square hole mounting
- Optional round .281 hole mounting and tapped 10-32 and 12-24 mounting

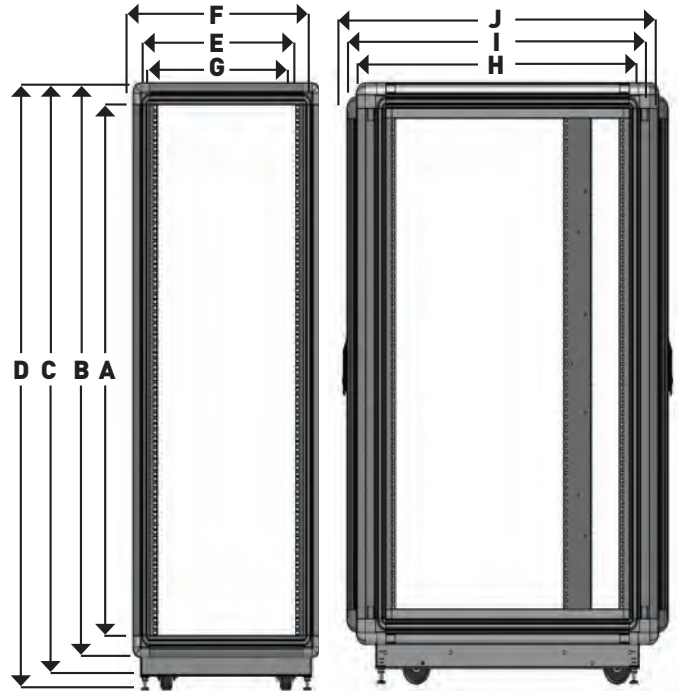
Caster Base

- Heavy duty steel caster base
- Full swivel casters
- Adjustable leveling feet



Standard Rack Sizing Chart

STANDARD ALUMINUM FRAME DIMENSIONS										
Nominal Height		24.5"	35"	42"	52.5"	61.25"	70"	73"	77"	84"
A	Inside Usable	24.59	35.09	42.09	52.59	61.34	70.09	73.59	77.09	84.09
B	Outside Frame	28.83	39.33	46.33	56.83	65.58	74.33	77.83	81.33	88.33
C	Frame Height with Base	30.79	41.29	48.29	58.79	67.54	76.29	79.79	83.29	90.29
D	Frame with Casters	32.08	42.58	49.58	60.08	68.83	77.58	81.08	84.58	91.59
Nominal Width		19"	20"	23"	24"	28"				
E	Inside Rack Width	19.09	19.76	24.09	24.09	28.09				
F	Outside Frame	23.33	24.00	28.33	28.33	32.33				
G	Hole to Hole Mtg w/std rail	18.31	18.31	22.31	23.31	27.31				
Depth		24"	30"	36"	42"					
H	Rail to Rail	24.00	30.00	36.00	42.00					
I	Overall Frame	26.42	32.42	38.42	44.42					
J	Overall with 2 Extruded Doors	28.67	34.67	40.67	46.67					



STANDARD ALUMINUM FRAME SIZES											
RACK WIDTH	Rack Height 19" Width	24.5" 14U	35" 20U	42" 24U	52.5" 30U	61.25" 35U	70" 40U	73" 42U	77" 44U	84" 48U	
	24" Deep	241924	351924	421924	521924	611924	701924	731924	771924	841924	Standard 19" EIA Rack Mounting Width
	30" Deep	241930	351930	421930	521930	611930	701930	731930	771930	841930	
	36" Deep	241936	351936	421936	521936	611936	701936	731936	771936	841936	
	42" Deep	241942	351942	421942	521942	611942	701942	731942	771942	841942	
	20" Width	24.5"	35"	42"	52.5"	61.25"	70"	73"	77"	84"	
	24" Deep	242024	352024	422024	522024	612024	702024	732024	772024	842024	Standard 19" Rack Mounting With 24" O.D. Width Footprint
	30" Deep	242030	352030	422030	522030	612030	702030	732030	772030	842030	
	36" Deep	242036	352036	422036	522036	612036	702036	732036	772036	842036	
	42" Deep	242042	352042	422042	522042	612042	702042	732042	772042	842042	
	23" Width	24.5"	35"	42"	52.5"	61.25"	70"	73"	77"	84"	
	24" Deep	242324	352324	422324	522324	612324	702324	732324	772324	842324	Standard 23" Telco Rack Mounting Width
	30" Deep	242330	352330	422330	522330	612330	702330	732330	772330	842330	
	36" Deep	242336	352336	422336	522336	612336	702336	732336	772336	842336	
	42" Deep	242342	352342	422342	522342	612342	702342	732342	772342	842342	
	24" Width	24.5"	35"	42"	52.5"	61.25"	70"	73"	77"	84"	
	24" Deep	242424	352424	422424	522424	612424	702424	732424	772424	842424	Standard 24" Communications Rack Mounting Width
	30" Deep	242430	352430	422430	522430	612430	702430	732430	772430	842430	
	36" Deep	242436	352436	422436	522436	612436	702436	732436	772436	842436	
	42" Deep	242442	352442	422442	522442	612442	702442	732442	772442	842442	
	28" Width	24.5"	35"	42"	52.5"	61.25"	70"	73"	77"	84"	
	24" Deep	242824	352824	422824	521924	612824	702824	732824	772824	842824	19", 23" or 24" Rack Mounting In Extra Wide Unit for Cabling and Airflow
	30" Deep	242830	352830	422830	522830	612830	702830	732830	772830	842830	
	36" Deep	242836	352836	422836	522836	612836	702836	732836	772836	842836	
	42" Deep	242842	352842	422842	522842	612842	702842	732842	772842	842842	

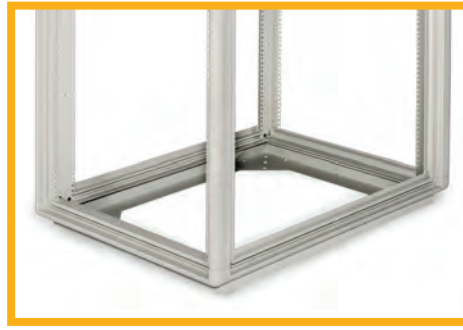
Standard Rack Variations & Options

Rack Base Options



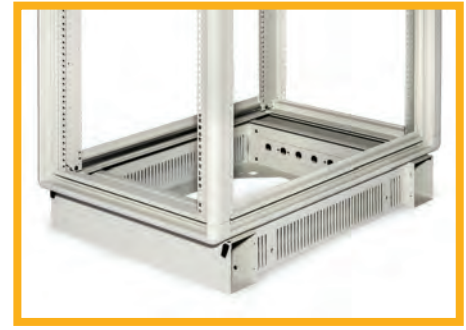
STANDARD CASTER BASE

e.g Frame Part # 732030-L



BOLT DOWN BASE

e.g Frame Part # 732030-LBB



WIREWAY BASE

Sold in Full Cabinet Assembly
Please Call For Details

Vertical Rail Mounting Options

Tapped 10-32 & 12-24 Mounting Holes

- Rails can be tapped either 10-32 or 12-24 for easy mounting
- All tapped rails are plated in clear zinc
- e.g. Part # 732030-TR10 (10-32), 732030-TR12 (12-24)

Reducer Vertical Mounting Rails

- Rack frames that feature 24.00" and 28.00" ID widths have the option of reducing the rack mount area to 19"
- Provides additional room for cable management and improves airflow
- e.g. Part # 732430-RR19

2 Pair of Standard Square Hole Mounting Rails

- e.g. Part Number 732030-2L



MSR-Series Server Rack

Martin Enclosures introduces its standard high quality pre-configured Server Rack. The MSR-Series Server Rack is a turn-key solution designed and ready for data centers and office IT applications.

The MSR-Series Server Rack is made from Martin's streamlined patented aluminum extruded frame, built rugged and still maintains an aesthetic appeal. The MSR-Series rack provides a secure environment for your critical equipment and supports a wide range of Martin accessories including power distribution, cooling, and cable management.

Features

Welded Patented Aluminum Extrusion Frame

- Lightweight 6063 T5 welded rugged frame
- Dynamic weight load 2,500 lbs; Static weight load 3,000 lbs
- 24" Overall frame width to fit on data center floor tiles
- Available in 24U, 40U, 42U, and 44U height options
- 36.00" and 42.00" depths available
- Textured powder coat finish

2 Pairs of Fully Adjustable Vertical Mounting Rails

- 19" Rack mount
- Standard square hole mounting

Caster Base

- Adjustable leveling feet

Solid Top Panel With Cable Access

- (2) 4.5" holes in the rear with cover plates

Perforated Front and Rear Lockable Doors

- 63% Ventilation for airflow

Externally Removable Side Panels

- Solid side panels

Lacing Panel

- Mounting up to (2) vertical PDUs without the use of tools and can accommodate a wide variety of cable management accessories





Dimensions					Frame Style			Assembly Required
Part Number	19" Rack Mount	Usable Width	Usable Height (U)	Usable Depth	Patented Aluminum Frame	Welded Frame	Riveted Steel Frame	
MSR422036	✓	19.76"	24U	36"	✓	✓		
MSR422042	✓	19.76"	24U	42"	✓	✓		
MSR702036	✓	19.76"	40U	36"	✓	✓		
MSR702042	✓	19.76"	40U	42"	✓	✓		
MSR732036	✓	19.76"	42U	36"	✓	✓		
MSR732042	✓	19.76"	42U	42"	✓	✓		
MSR772036	✓	19.76"	44U	36"	✓	✓		
MSR772042	✓	19.76"	44U	42"	✓	✓		

MET-Series Network Rack

Martin Enclosures MET-Series Network Rack comes pre-configured to meet and exceed expectations of a Network Rack. The Martin MET-Series is designed with optimal cable management space and streamlined airflow management.

The MET-Series Network Rack is made from Martin's streamlined patented aluminum extruded frame design. The MET-Series supports Martin's wide variety of accessories. The Martin Network rack is wider than the standard server rack which allows for a larger cable management area. The 19" rack area can be justified to the left, right, or centered to accommodate variations in network cabling situations. The 19" rack area can also easily be converted into a 23" rack area.

Features

Welded Patented Aluminum Extrusion Frame

- Lightweight 6063 T5 Welded Rugged Frame
- Dynamic weight load 2,500 lbs; Static weight load 3,000 lbs
- 28.33" Overall frame width
- Available in 40U, 42U, and 44U height options
- 36.00" and 42.00" depths available
- Textured powder coat finish

2 Pairs of Fully Adjustable Vertical Mounting Rails

- 19" Rack Mount
- Standard square hole mounting

Caster Base

- Adjustable leveling feet

Solid Top Panel With Cable Access

- (2) 4.5" holes in the rear with cover plates

Perforated Front and Rear Lockable Doors

- 63% Ventilation for airflow

Externally Removable Side Panels

- Solid side panels

Lacing Panel

- Mounting up to (2) vertical PDUs without the use of tools and can accommodate a wide variety of cable management accessories





Dimensions					Frame Style			
Part Number	19" Rack Mount	Usable Width	Usable Height (U)	Usable Depth	Patented Aluminum Frame	Welded Frame	Riveted Steel Frame	Assembly Required
MET702436	✓	24.09"	40U	36"	✓	✓		
MET702442	✓	24.09"	40U	42"	✓	✓		
MET732436	✓	24.09"	42U	36"	✓	✓		
MET732442	✓	24.09"	42U	42"	✓	✓		
MET772436	✓	24.09"	44U	36"	✓	✓		
MET772442	✓	24.09"	44U	42"	✓	✓		

MPR-Series Server Rack

The MPR-Series Server Rack is a new addition to the Martin server rack line, which features an all steel frame opposed to Martin's signature aluminum frame. The MPR-Series Server Rack gives customers a versatile and affordable option to safely secure their data.

The MPR-Series Server Rack is designed to meet and exceed the standards of today's IT market trends. Optimal cable management is built in to the top panel, bottom panel, and rear lacing panel. The rear lacing panels allows for multiple cable management options along with tool-less mounting for two vertical PDUs per side.

Features

Rugged Multi-Functional Riveted Steel Frame

- Dynamic weight load 2,500 lbs
- 23.85" Overall frame width
- Available in 42U and 44U height options
- 30.00" and 46.00" overall frame depths
- Textured powder coat finish

2 Pairs of Fully Adjustable Vertical Mounting Rails

- 19" Rack mount
- Standard square hole mounting

Caster Base

- Adjustable leveling feet

Front and Rear Cable Entry on Top and Bottom

Perforated Front and Double Rear Lockable Doors

- 63% Ventilation for airflow

Externally Removable Locking Split Side Panels

- Quick release side panels

Lacing Panels

- Mounting up to (2) vertical PDUs without the use of tools and can accommodate a wide variety of cable management accessories





Dimensions					Frame Style			
Part Number	19" Rack Mount	Usable Width	Usable Height (U)	Usable Depth	Patented Aluminum Frame	Welded Frame	Riveted Steel Frame	Assembly Required
MPR731936	✓	19.12"	42U	36"			✓	
MPR731942	✓	19.12"	42U	42"			✓	
MPR771936	✓	19.12"	44U	36"			✓	
MPR771942	✓	19.12"	44U	42"			✓	

MAV-Series AV Rack

Martin Enclosures introduces the MAV-Series AV/Broadcast Rack. The MAV-Series Server Rack is specifically designed for Audio Visual and Broadcasting Applications. The MAV gangable rack is constructed with a light-weight, adaptive, and ready to assemble steel frame. The MAV-Series is typically used in a multi-rack installation bolted together in-row. The versatile open frame concept also supports many cable management options.

The MAV-Series Server Rack was developed for the AV and Broadcasting market. Designed with a rugged steel frame and our signature aluminum mounting stiffeners, the MAV-Series is a versatile and economic rack solution with many accessories to chose from. With an easy bolt together frame you will be ready to mount your equipment in no time.

Features

Rugged Multi-Functional Steel Frame

- Weight load 500 lbs
- 19.50" Overall frame width
- Available in 24U and 42U height options
- 20.00" and 26.00" overall frame depths
- Textured powder coat finish

2 Pairs of 12 Ga, 10-32 Tapped Posts

- 19" Rack mount
- E-Coat paint

Open Style Base

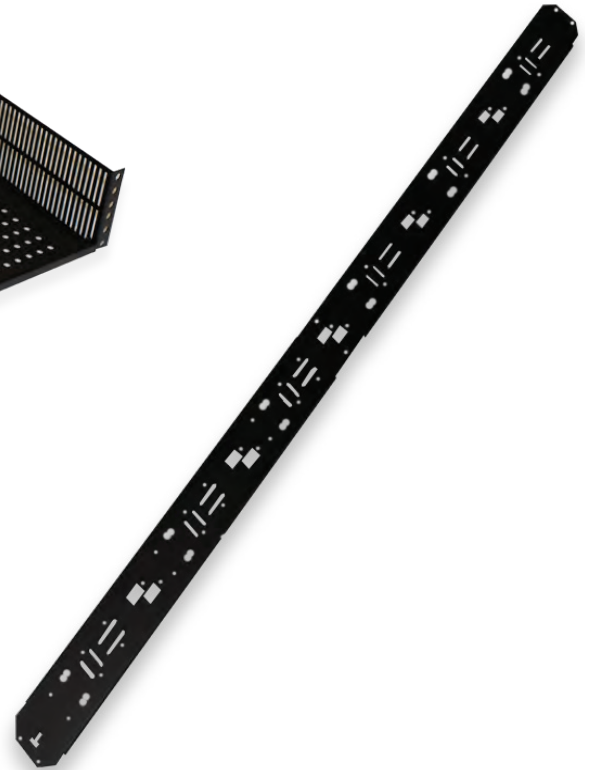
Solid Top Panel with (4) 4.5" Cable Access Hole

- (2) Holes in the front and (2) in the rear

Additional Options

- | | |
|--------------------------|----------------------|
| • Front and Rear Doors | • Casters |
| • Side Panels | • Joining Kit |
| • Rack Shelves | • Top Fans |
| • Horizontal Lacing Bars | • Cable Management |
| • Vertical Lacing Panel | • Power Distribution |
| • Blanking Panels | • Rack Drawer |
| • Skirted Caster Base | • Keyboard Trays |
| • Cable Chase | |





Dimensions					Frame Style			
Part Number	19" Rack Mount	Usable Width	Usable Height (U)	Usable Depth	Patented Aluminum Frame	Welded Frame	Steel Frame	Assembly Required
MAV421920	✓	17.80"	24U	20"			✓	✓
MAV421926	✓	17.80"	24U	26"			✓	✓
MAV731920	✓	17.80"	42U	20"			✓	✓
MAV731926	✓	17.80"	42U	26"			✓	✓
MAV-FS1926-2U	RACK SHELF	17.80"	2U	16"				
LP42	LACING PANEL		42"					
LP73	LACING PANEL		73"					

MSV-Series Pull Out and Swivel Rack

Martin Enclosures introduces the MSV-Series Server Rack. The MSV-Series Server Rack is designed with the ability to pull out from the wall and swivel/rotate. This feature gives customers the ability to pull the rack out and access the rear of the cabinet with ease and limited space requirements. The MSV-Series is a perfect solution for AV and Broadcasting environments.

The MSV-Series Server Rack was developed for applications where space is limited and valuable. The MSV rack weight load is rated at 1,000lbs. The rack has the ability to rotate 360 degrees with cabling as your only limit. The rack must be bolted to the floor as well as the wall. It is also compatible with most of Martin's rack accessories.

Features

Rugged Multi-Functional Patented Aluminum Frame

- 24.00" Overall frame width
- Available in a variety height options
- 24.00" and 30.00" overall frame depths
- Textured powder coat finish

2 Pairs of Fully Adjustable Vertical Mounting Rails

- 19" Rack mount
- Standard square hole mounting

Pull Out and Swivel Base

- 1,000 lb Slides
- 28" Pull out extension (For 24" depth version)
- 35" Pull out extension (For 30" depth version)
- Safety latches to lock in place





Dimensions					Frame Style			
Part Number	19" Rack Mount	Usable Width	Usable Height (U)	Usable Depth	Patented Aluminum Frame	Welded Frame	Riveted Steel Frame	Assembly Required
MSV732024	✓	19.76"	42U	24"	✓	✓		
MSV732030	✓	19.76"	42U	30"	✓	✓		

Colocation Enclosures

Colocation Enclosures are flexible and innovative enclosures for network, Internet, and application service providers offering their clients complete security and protection of their valuable network equipment in host locations.

Martin Colocation Enclosures are the most versatile enclosure racks on the market today with the ability to change from 2 to 3 to 4 bays and back again, with minimal effort.

The Colocation Enclosures are designed for additional security, by separating each customer's equipment and cabling.

Features

Rugged Multi-Functional Patented Aluminum Frame

- Patented aluminum extruded 6063-T5 welded frame
- Available in a variety of heights, widths, and depths
- Dynamic weight load 2,500 lbs; Static weight load 3,000 lbs
- Modified standard sizes, configurations and colors available upon request
- Textured powder coat finish

3 Pairs of Fully Adjustable Vertical Mounting Rails

- 19" Rack mount
- Standard square hole mounting
- Additional options available

Side Panels and Doors

- Solid, split and quick release side panels available
- Perforated, Lexan, and solid doors available
- Bays can be keyed differently

Cable Access Top and Bottom Panels

- Special top and bottom panels can accommodate cable access for each bay

Horizontal Security Panel

- Security panel separates bays within the enclosure
- Vented and solid available

Secure Wire & Cable Management

- Cable channels that run to top or bottom



Double Wide Enclosures

Double wide rack mount enclosures are designed with two side by side 19" rack mount areas in the same enclosure.

Double wide rack mount enclosures are typically used when there are more servers or equipment than a single wide enclosure can house and it is desired to have the equipment in one rack, or when it is more convenient to house servers in the same enclosure.

Double wide rack mount enclosures may be used to make it easier to wire and cable between two racks without walls interrupting the cable flow. Double wide rack mount enclosures offer the same features as the single wide cabinets and can be made in many sizes.

Features

Rugged Multi-Functional Patented Aluminum Frame

- Standard 48.00" overall frame width (Custom available)
- Available in a variety height and depth options
- Textured powder coat finish
- Modified standard sizes, configurations and colors available upon request

Fully Adjustable Vertical Mounting Rails

- [2] 19" Rack mount areas
- Standard square hole mounting

Additional Options

- Front and Rear Doors
- Side Panels
- Top Panels
- Vertical Lacing Panel
- Skirted Caster Base
- Top Fans
- Cable Management
- Power Distribution



For Custom Applications Contact Us at 603.474.2626
or sales@martinenclosures.com

Vertical Wall Mount Rack

Wall Mount Rack configurations are designed specifically for environments with limited floor space, allowing customers to utilize wall space when full height cabinets are not needed or practical.

Wall Mount Racks come in various configurations including 4U, 6U and 8U vertical wall mounts. All wall mount racks have 30" of usable depth. They come with two front door options, solid steel and smoked Lexan.

Custom sizes and modified standard configurations are available.

Features

Rugged Multi-Functional Steel Riveted Frame

- 25.25" Overall frame width
- 4U, 6U, and 8U depth options
- 37.50" Height
- Textured black powder coat finish

Pair of Vertical Mounting Rails

- 19" Rack mount
- Standard square hole mounting
- Servers are mounted vertically to save space

Top Access Door

- Solid steel and Lexan options

Cable Access

- [2] 4.5" holes in the bottom for cable access or to add fans



Part Number	Dimensions				Frame Style		
	19" Rack Mount	Overall Width	Usable Height (U)	Usable Depth	Patented Aluminum Frame	Welded Frame	Riveted Steel Frame
VWM-4-30-S	✓	25.25"	4U	30"			✓
VWM-4-30-L	✓	25.25"	4U	30"			✓
VWM-6-30-S	✓	25.25"	6U	30"			✓
VWM-6-30-L	✓	25.25"	6U	30"			✓
VWM-8-30-S	✓	25.25"	8U	30"			✓
VWM-8-30-L	✓	25.25"	8U	30"			✓

Table Top Enclosure

Martin Table Top Enclosures are server cabinets that provide economical storage for areas limited in space, or when a full server rack is not desired. Table Top Enclosures are ideal for industrial and office environments. All Table Top Racks have 30" of usable depth.

The standard configuration is equipped with vented front and rear doors.

Custom sizes and modified standard configurations are available.

Features

Rugged Multi-Functional Steel Welded Frame

- 23.62" Overall frame width
- 3U, 6U, 9U, 12U and 15U height options
- 35.00 Overall frame depth
- Textured powder coat finish

2 Pair of Adjustable Vertical Mounting Rails

- 19" Rack mount
- Standard square hole mounting

Top and Bottom Cable Access in Rear

Front and Rear Locking Doors

- Vented steel and Lexan Door options

Additional Options

- Combo locking swing handle
- 105 CFM fan
- Shelves
- Vented Lexan doors
- Casters
- Locking casters



Part Number	Dimensions				Frame Style		
	19" Rack Mount	Overall Width	Usable Height (U)	Usable Depth	Patented Aluminum Frame	Welded Frame	Riveted Steel Frame
TTSC051930-VDNF	✓	23.62"	3U	32"		✓	
TTSC101930-VDNF	✓	23.62"	6U	32"		✓	
TTSC161930-VDNF	✓	23.62"	9U	32"		✓	
TTSC211930-VDNF	✓	23.62"	12U	32"		✓	
TTSC261930-VDNF	✓	23.62"	15U	32"		✓	

EMI/RFI Shielded Enclosures

Martin Enclosures has a variety of solutions for customer applications that require containing and/or protecting against EMI/RFI interference. The appropriate solution is dependent upon the level of containment required and the frequency range as well as the environment. These are typically established by a specification or industry standard that the end users product has been required to comply to.

For commercial products with requirements for shielding, the goal is to protect the equipment against conducted or broadcast interference from other sources or to protect against interfering with other equipment in the vicinity. These applications would typically fall under FCC or VDE levels. The Martin standard shielding solution is ideal for these requirements and consists of conductive fabric over foam gasketing at all seams. Air venting is accomplished either by using compliant vent patterns or by use of appropriate filters. Windows can also be provided using a special EMI/RFI Lexan material with embedded mesh.

For applications requiring higher attenuation levels at low and very high frequency levels, such as Military and Government standards, metal mesh gasketing is typically employed along with multiple handles, latches and panel fasteners. Air venting includes 1/8" Honeycomb EMI/RFI filters up to 1/2" thick. If power distribution is part of the requirement, the appropriate input line filter is included. All cable input/output is accomplished via shielded feed-thru connectors. Consideration for the product environment is also a factor in selecting materials and design features for the proper shielded enclosure solution.

Features

Rugged Multi-Functional Steel Welded Frame

- All standard frame sizes available
- Resilient open cell urethane foam covered with a conductive fabric is used to seal the enclosure in all gaps where side panels, doors, bases, and top panels meet with the frame.
- Textured powder coat finish

All Steel Parts are Made from Galvaneal or are Zinc Coated

For Custom Applications Contact Us at 603.474.2626 or sales@martinenclosures.com



Seismic Server Racks

Our Seismic enclosures have fully welded aluminum extrusion construction providing maximum strength for rack mounted equipment in the most severe seismic environments.

Based on the standard, patented, Martin Enclosures frame design, the “NEBS” compliant enclosure configuration has been fully tested and certified to be compliant with the Telcordia (Bellcore) GR-63-CORE requirements for Zone 4 Seismic environments. In addition to traditional telecommunications, networking and IT environments, this rugged enclosure solution is ideal for use in any rugged or deployed application where premium strength and performance are required.

Offered as 42U 19” rack mount cabinet, 36” usable depth, most all standard Martin options and accessories can be utilized. The supplementary welded structural supports in the base and frame corners as well as the door, side panel and hardware upgrades, all contribute to this enclosure’s superb performance in extreme Zone 4 seismic environments with installed loads of up to 1000 lbs.

Features

Rugged Multi-Functional Steel Welded Frame

- Patented aluminum extruded 6063-T5 welded frame
- 19” and 23” versions available
- Accommodates up to 40U of 23” or 42U of 19” rack mounted equipment
- Rugged bolt down base with cable entry
- Textured powder coat finish
- Tested and certified to Bellcore Telcordia GR-63-CORE Zone 4 seismic requirements with up to 1,000 lbs of installed equipment

2 Pair of Adjustable Vertical Mounting Rails

- 10-32 tapped holes on standard EIA-310 rack mount pattern

Additional Options

- Front and rear doors that have 3-way latching with locking swing handle
- Rack mount equipment support angles
- Side panels
- Top panel
- Side and rack mounted cable management solutions
- Top mounted lifting eyes



Fiber Frame Racks

Designed specifically to meet the special requirements of fiber cable routing in a standard 19" network management environment.

The fiber frame is available with standard a bolt-down angle base or wire way base for In-Row solutions.

Front fiber management and rear cable management in each of the vertical fiber channels.

Features

2 Post Steel Fiber Frame Rack

- 45U Height
- Standard heavy duty mounting angle base
- Textured powder coat finish

Vertical Mounting Rails

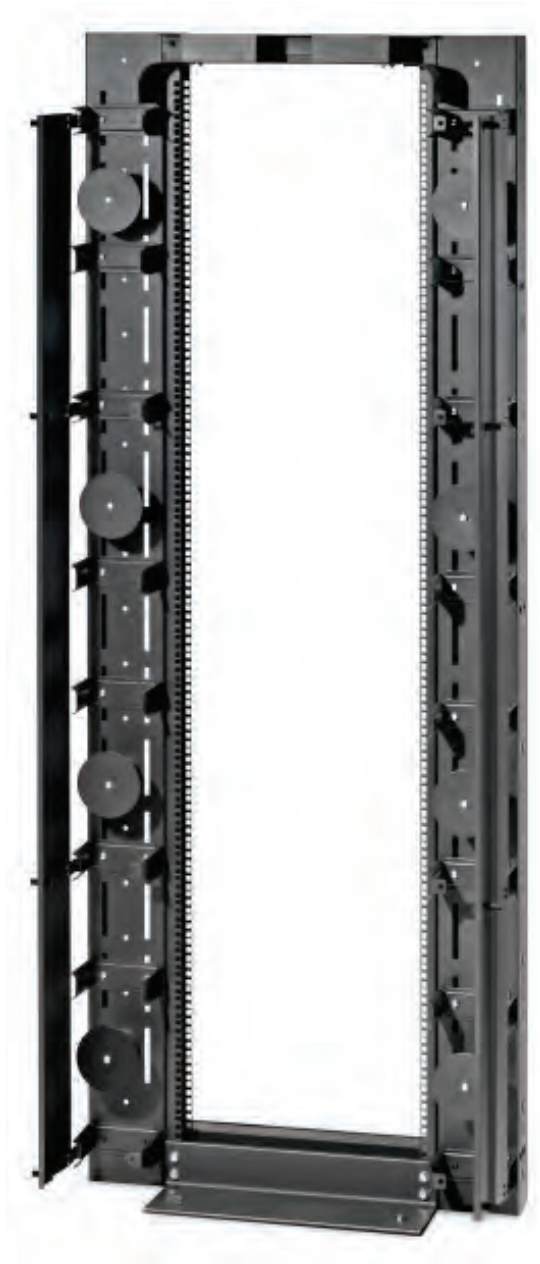
- 19" Rack mount
- Standard square hole mounting

Fiber Channels

- Fiber channels on either side or both sides
- Channels have fiber spools in the front and Velcro saddles for cable management in the rear
- Side-mounted routing channels have full front hinging doors

Additional Options

- Rack mounted cable management solutions
- Cantilever shelves
- Variety of power distribution solutions
- Wire way base for In-Row solutions
- Optional colors to match In-Row equipment
- Variable heights to match adjacent server racks in In-Row solutions



Custom Server Rack Solutions

Custom Server Racks and Enclosures can be manufactured to meet unique requirements. Martin Enclosures offers a complete line of high performance enclosure solutions that can be custom manufactured to meet most application's requirements. Some applications require the expertise of system engineers to design. The experts at Martin Enclosures are highly qualified to configure advanced solutions for you.

Server Racks and Enclosures sometimes require unique dimensions. Martin Enclosures designs and creates truly custom solutions for these situations. Customers can provide their own specifications and drawings or they can work closely with an expert at Martin Enclosures to design and manufacture a custom server rack or enclosure to meet their needs.

If your application requires specific dimensions, feel free to call us at 1-603-474-2626. Martin International Enclosures has accumulated a wealth of experience in maintaining first-rate manufacturing and exceptional customer service.

Custom Options & Capabilities

- Rack & Enclosure Overall Dimensions
- Silk Screening
- Powder Coat Color
- Customer Equipment Integration
- Shock and Vibration
- Private Labeling
- Cooling Solutions
- Power Solutions
- Cable Management
- Sound Dampening

Please contact Martin for any custom requests at sales@martinenclosures.com or 603.474.2626



Power Management



Vertical PDUs

Custom and standard vertical power strips designed to complement our server rack and rack mount enclosures with the same quality and flexibility.

Vertical power strips offer power distribution solutions for any equipment enclosure. Customers are able to optimize power consumption with specific and high-end power distribution capabilities, while minimizing power cabling for best performance



Features

- Most of our Power Distribution Units are ETL/UL approved
- Completely adaptable vertical and rack mount units and box sizes can be designed to fit any mounting application
- Input power options include via cord and plug, input receptacle or hardwire terminal blocks
- Single phase 120V, 208 and 230V, 120/208 3-phase, up to 100A
- Various input and power cord solutions
- Output receptacles can be accommodated including all NEMA straight and twist lock styles, as well as IEC320 C13 and C19, in any combination
- Over-current alarm LEDs
- Standard RMS and “peak” level metering with options for RS232/RS485 interface
- Most power strips are ETL/UL cabled and tested

Additional Options

- Standard and custom configurations
- Custom silk screening
- Color coding



For Custom Configurations Contact Us at
sales@martinenclosures.com or 603.474.2626

Rack PDUs

Server rack power strips are available standard or custom to complement our enclosures and are designed with the same quality and flexibility.

Rack mount power strips provide the ability to deliver specific and/or high-end power distribution to each equipment enclosure. Customers are able to optimize power consumption, minimize power cabling and decrease points of failure.



Features

- Most of our Power Distribution Units are ETL/UL approved
- Completely adaptable vertical and rack mount units and box sizes can be designed to fit any mounting application
- Input power options include via cord and plug, input receptacle or hardwire terminal blocks
- Single phase 120V, 208 and 230V, 120/208 3-phase, up to 100A
- Various input and power cord solutions
- Output receptacles can be accommodated including all NEMA straight and twist lock styles, as well as IEC320 C13 and C19, in any combination
- Over-current alarm LEDs
- Standard RMS and "peak" level metering with options for RS232/RS485 interface
- Most power strips are ETL/UL cabled and tested

Additional Options

- Standard and custom configurations
- Custom silk screening
- Color coding

For Custom Configurations Contact Us at
sales@martinenclosures.com or 603.474.2626

PDU Part Numbers

PDU Style		Input					Output				Special Features
Part Number	Rack PDU	Vertical PDU	Input Plug Type	Load Rating	UL Load Rating	Voltage	Outlets	C13	NEMA 5-20R	NEMA 5-15R	Misc.
PS19	✓		5-15P	15A	12A	120V	6			✓	
PS19-NS	✓		5-15P	15A	12A	120V	6			✓	
PS4215		✓	5-15P	15A	12A	120V	10			✓	
PS4220		✓	5-20P	20A	16A	120V	10		✓		
PS7015		✓	5-15P	15A	12A	120V	11			✓	
PS7015-20		✓	5-15P	15A	12A	120V	20			✓	
PS7020		✓	5-20P	20A	16A	120V	11		✓		
PSM7020-6-20-TL		✓	L5-20P	20A	16A	120V	20		✓		
PSM7020-12-20-TL		✓	L5-20P	20A	16A	120V	20		✓		
PSM7020M-24-1		✓	L5-20P	20A	16A	120V	24		✓		Current Monitor with LED Display
PSM70CM115-CSP1		✓	L5-30P	30A	24A	120V	24		✓		Current Monitor with LED Display
PSM70220C13-AF1		✓	L6-20P	20A	16A	230V	25	✓			
PSM7020-630-RM1		✓	L6-30P	30A	24A	230V	24	✓			
PSM70208ML630-1		✓	L6-30P	30A	24A	230V	24	✓			Current Monitor with LED Display
PSM7024-3P30-1		✓	L21-30P	30A	24A	120/208V	24		✓		3-PHASE
PSM7024-3P20-1		✓	L21-20P	20A	16A	120/208V	24		✓		3-PHASE
PSM70-C13C19TL6		✓	l6-20P	15A/20A	12A/16A	220V	24	✓			[4] C19s
PSRM2U22020-RM1	✓		L6-20P	20A	16A	220V	6				L6-20R Twistlock Receptacles
PSRM1U-0820-10	✓		5-20P	20A	16A	115V	8		✓		
PSRM1U-10-20TL1	✓		L5-20P	20A	16A	115V	10		✓		
PSRM1U-230-8-1	✓		L6-30P	30A	24A	230V	8	✓			[4] C19s
PSRM1U-23015-8	✓		C14	15A	12A	230V	8	✓			

***Note; All Part Numbers are Not Shown**

For Custom Configurations Contact Us at sales@martinenclosures.com

Power Distribution Enclosures (PDE)

Data center managers, facility managers and design engineers now have a power distribution system available that will reduce circuit costs, increase flexibility and complement reliability improvements.

Martin Power Distribution Enclosures (PDE) with integrated wire management reduces seal tight cable costs and the need for external raceways. The wire management is located in the lower front and rear of the Power Distribution Enclosures and server cabinets for easy access to power circuits. Additional enclosures can easily be added to an existing row. Traditional bottom or top cable landings serve non-adjacent Martin Enclosures, various brand enclosures and stand alone systems.

The Martin Power Distribution Enclosures with integrated wire management can be installed in raised floor, reduced height floor and non-raised floor environments.

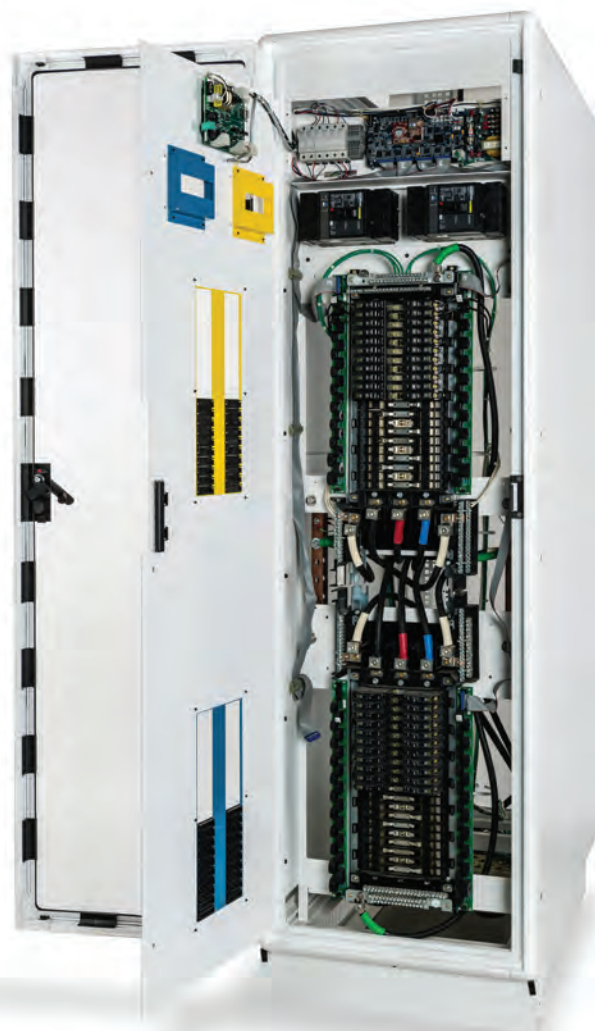
Features

- Patented aluminum extruded 6063-T5 welded frame with steel doors and panels rated at 2,500 LBS with bolt down base
- Designed for In-Row data center applications
- Matches popular Martin Enclosures
- Height and depth of PDE can vary to match server cabinets
- Durable powder coat finish
- Delivered assembled and tested
- Locking front and rear doors
- Removable access panels
- 120/280 VAC four wire plus ground input
- Dual input option for dual line cord equipment
- Available in input configurations for
 - 208/120v, WYE 3-phase, up to 225A
 - 400/230v, WYE 3-phase, up to 225A
 - 480v DELTA to 208/120v WYE 3-phase, up to 45 kva
- 84 or 168 breaker positions
- 200% rated neutral
- Universal panel boards
- Integrated wire management
- Easy access cable management in lower front and rear of enclosures

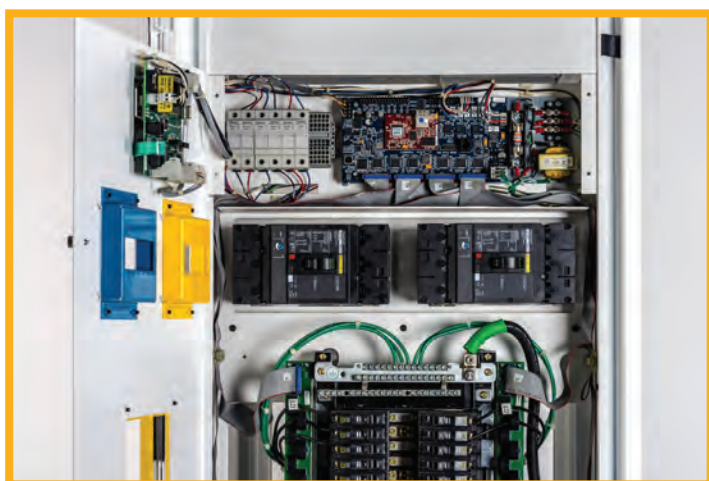


Features Continued

- Top and/or bottom cable landing
- ETL listed
- 84 breaker position enclosure
- 168 breaker position enclosure
- Reduces circuit costs
- Reduces the amount of expensive seal tight cables required
- Reduces labor for installing new circuits
- Reduces under floor and overhead cable clutter
- Can expand existing power distribution systems
- Increases cooling airflow under raised floor
- Easier to add server cabinets to existing row
- Can be used in raised floor, reduced height and non-raised floor applications
- Supports contractor installed receptacles feeding vertical plug strips in server cabinets
- Supports better cable housekeeping
- A single PDE can feed non-adjacent rows with the wire management feature



For Part Numbers Please Contact Us at
sales@martinenclosures.com or



Additional Options

- Custom color, height, width, and depth to match existing enclosures
- Several door options available
- Dual input
- Surge protection device (SPD)
- True RMS current meter with digital display
- Individual branch circuit monitoring (BCM)
- Main breakers
- Factory provided branch breakers
- Top conduit landing
- Multiple enclosure joining kit
- Power cables

Power Accessories

Buss Bars

Buss Bars are provided as a common point of grounding all components and installed equipment in an enclosure.

- Copper buss bars come in horizontal 19", 23", or 24" rack mount versions as well as vertical sizes for each height of the cabinet
- Available in isolated or non isolated types
- Isolated and non isolated styles include ¼" thick and 1" wide copper with 10-32 tapped holes
- Isolated buss bars come with nylon shoulder washers and nylon flat washers to isolate from frame
- Vertical buss bars mount to upper and lower frame member and center stiffener
- Horizontal buss bars mount to vertical mounting rails



Grounding Kits

Grounding Kits are available for all Martin enclosures and are installed at time of manufacturing. The grounding kit consists of grounding straps to all exterior panels and doors, plated vertical mounting rails, and a grounding stud in the base.

The frame is free of paint in the areas that need electrical contact from part to part.



Isolation Mats

Isolation mats, commonly known as Switch Board Mats, are used to electrically isolate the enclosure from the data center floor or room floor where the enclosure is installed.



For Part Numbers Please Contact Us at
sales@martinenclosures.com or 603.474.2626

Cooling Solutions



In-Row Heat Exchanger

Martin's Heat Exchanger Unit (HXU) is designed as an In-Row integrated solution to remove server-generated heat from a typical IT server room environment using a chilled water supply. It is configured in the same style and size as Martin's server and equipment cabinets, and Power Distribution Enclosures (PDEs).

A controlled supply of chilled water is provided to each Heat Exchanger. The chilled water passes through the heat exchanger coils where it collects heat from the rear (hot aisle) and the rear of the adjacent server cabinets and exits the Heat Exchanger and returns to the chiller.

The front mounted fans pull the heated air from the rear through the Heat Exchanger coils where it is cooled and exhausted to the front (cold aisle) and front sides, if desired, directly into adjacent server cabinets.

The Heat Exchanger Unit is Available in Three Configurations:

In-Row "Open Loop" Configuration

Incorporates all of the controls, display, monitoring devices, heat exchange coils and plumbing into each HXU enclosure which is located between In-Row server cabinets and optionally on each end of the row. Each unit operates independently from the other HXUs. The heat is collected from the "hot aisle", pulled through the heat exchange coils, and the cooled air exhausts into the "cold aisle".

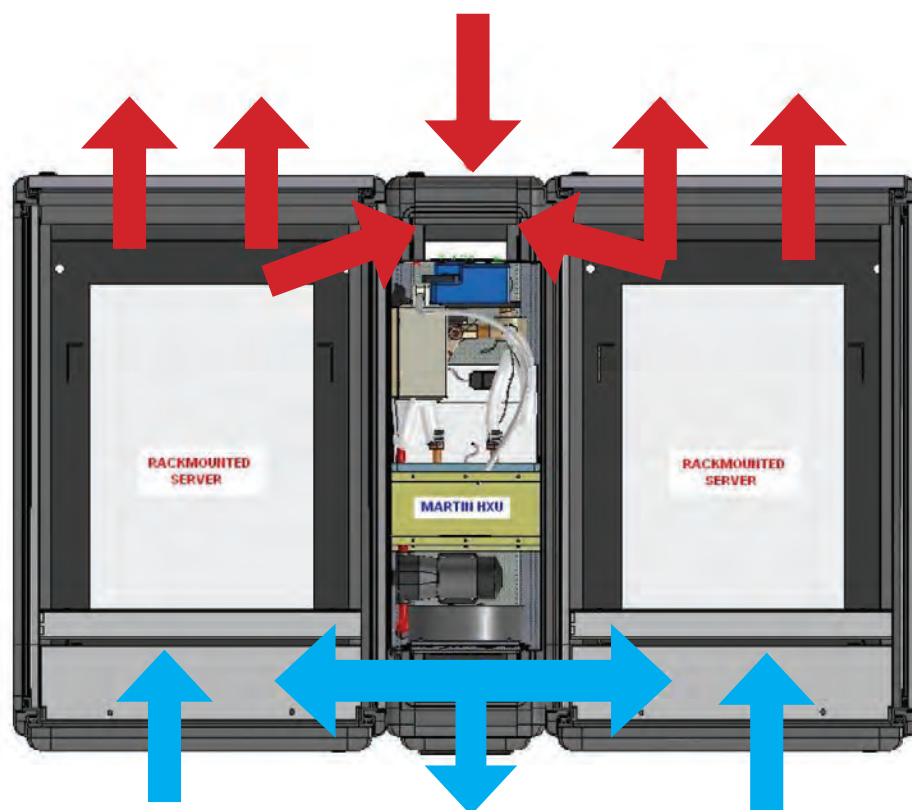
In-Row "Closed Loop" Configuration

Incorporates the same features as the above except the front and rear doors are solid. The hot air is collected directly from the rear of the server cabinets, pulled through the coils, and the cooled air exhausts directly into the front of the adjacent server cabinets.

Hybrid Configuration

The hybrid configuration incorporates both airflow solutions in the same configuration so that the hot air is collected from both the hot aisle and directly from the rear of the servers, and the cold air exhausts both into the cold aisle as well as directly to the fronts of the adjacent servers.





Features

- Nominal 20,000 watt heat removal per HXU
- PLC controls with color touch screen display
- Ethernet remote interface
- User settable alarms for temperature, humidity, coolant flow, condensation, airflow
- Six individually replaceable exhaust fans, 115 VAC
- User controllable fan speed
- Inlet and outlet air temperature monitoring
- Water flow control
- Inlet and outlet water flow monitoring
- Outlet side humidity sensing
- Washable rear door air filter
- HXU can be joined to adjacent enclosures using JK1000EX (joining kits optional)
- 10 NPTF coolant fittings provided at lower rear (optional top input available)
- Leak proof base pan and cable style leak detector
- Automatic transfer switch for dual power input
- Condensate pan and pump below coil area

Typical Performance / Operating Parameters

- Nominal heat load: 20,000 watts based on
- 6.4 GPM coolant flow 6.4 GPM
- Inlet water temperature: 48F degrees
- Water pressure drop: ~12 PSIG
- Airflow: 2800 CFM total
- Inlet air temp: 95F degrees
- Outlet air temp: 72F degrees
- Operates on a single 115V 20A circuit

For Part Numbers Please Contact Us at
sales@martinenclosures.com or 603.474.2626

Air Conditioned Enclosures

Advanced air conditioned enclosures are specifically designed to completely control internal temperature. Air conditioned enclosures are generally for locations that do not have room air-conditioning or constant air-conditioning.

The Martin Air Conditioned enclosures have an internal closed loop cooling system and the air that is used to cool the condensers is the ambient room air and is exhausted back into the room unless special ducting is set up to exhaust the hot air out of the room.

Features

- Air Conditioned Enclosures are available in side mount, rack mount and top mounted configurations and are configured in a variety of different Cabinet Heights and Depths
- Rack mounted AC Sizes include 4K BTU (115v or 230v) and 9K BTU (230v)
- Side mounted AC Sizes include 8K BTU, 12K BTU (115v or 230v) and 19K BTU (230v)
- Top Mounted AC Sizes include 8K BTU (230V)
- Side mounted Air Conditioners are shipped separately; the Rack and Top Mounted Air Conditioners are shipped fully assembled.
- Earth Friendly Refrigerant
- Mechanical Thermostat located behind the filter on rack mount and Top mount versions and on side of AC unit of Side Mount versions
- LED Temperature Display on Front Door Displaying in 'F' Degrees ('C' Degrees available on special order)
- Ducting Boot Kits available for all Air Conditioner sizes for ducting exhaust air to plenum or other area
- Cleanable, reusable aluminum mesh filter
- Includes Malfunction Switch for use with a variety of customer provided alarms
- Every unit tested prior to shipping
- Textured powder coat finish
- Multiple color options
- Fully sealed enclosure assembly; closed loop air conditioned cooling
- Square hole mounting rails on standard EIA 310 rack mount pattern for M6 cage nuts
- Patented Aluminum extruded 6063-T5 welded frame with steel doors and panels



Part Number	AC Unit Style		Dimensions			Cooling
	Rack Mount	Side Mount	Usable Height (U)	Rack Height	Usable Depth	Cooling Power
A612036ACRM10K2	✓		23U	68.83	36"	9K BTU
A612036-ACSM12K		✓	35U	68.83	36"	12K BTU
A612036-ACSM20K		✓	35U	68.83	36"	20K BTU
A612042-ACSM12K		✓	35U	68.83	42"	12K BTU
A612042-ACSM20K		✓	35U	68.83	42"	20K BTU
A702036ACRM10K2	✓		28U	77.58	36"	9K BTU
A702036-ACSM12K		✓	40U	77.58	36"	12K BTU
A702036-ACSM20K		✓	40U	77.58	36"	20K BTU
A702042-ACSM12K		✓	40U	77.58	42"	12K BTU
A702042-ACSM20K		✓	40U	77.58	42"	20K BTU
A732036ACRM10-1	✓		30U	81.08	36"	9K BTU
A732036-ACSM12K		✓	42U	81.08	36"	12K BTU
A732036-ACSM20K		✓	42U	81.08	36"	20K BTU
A732042-ACSM12K		✓	42U	81.08	42"	12K BTU
A732042-ACSM20K		✓	42U	81.08	42"	20K BTU
A772036ACRM10-3	✓		32U	84.58	36"	9K BTU
A772036-ACSM12K		✓	44U	84.58	36"	12K BTU
A772036-ACSM20K		✓	44U	84.58	36"	20K BTU
A772042-ACSM12K		✓	44U	84.58	42"	12K BTU
A772042-ACSM20K		✓	44U	84.58	42"	20K BTU
A842036ACRM10K5	✓		48U	91.58	36"	9K BTU
A842036-ACSM12K		✓	36U	91.58	36"	12K BTU
A842036-ACSM20K		✓	48U	91.58	36"	20K BTU
A842042-ACSM12K		✓	48U	91.58	42"	12K BTU
A842042-ACSM20K		✓	48U	91.58	42"	20K BTU



Cooling Accessories

Fan Top Panel

Fan top panels provide a cost effective way to cool or assist in cooling an enclosure by exhausting the hot air that rises to the top of the rack keeping equipment cool and not blowing the hot air into an aisle.

Fan top panels come in a wide variety of configurations from 105 cfm to 1605 cfm. They can be configured with (1-9) 105 cfm fans or (1-3) 535 cfm fans. Fan tops can come in either 115v or 230 volt versions.



Air Baffle Kits

Air baffle kits are installed in the front of the cabinet on both sides, top, and bottom when the front pair of vertical mounting rails are recessed back from the panel opening in all enclosures.

Air baffle kits keep the cool air entering the cabinet from traveling around the equipment and forces it to enter the face of the mounted equipment maximizing the cooling effect of the air.

Using air baffle kits makes cooling the servers and equipment more cost effective. Kits are sized to each enclosure as well as the spacing of the front vertical mounting rails. Filler panels are suggested to fill open rack space in order to get the best cooling effect.



Temperature Displays

Temperature displays are available upon request and can be integrated in any enclosure to monitor the current temperature.

Temperature displays are available with one or two monitoring probes and run off of 115v power.



Thermostats

Thermostats are intended to mount inside any enclosure that has fans. The thermostats are wired into the circuit of the fans to provide on/off switching to assist in maintaining the desired temperature.



For Part Numbers Please Contact Us at
sales@martinenclosures.com or 603.474.2626

Rack Accessories and Options



Door Options

Lexan Door

Lexan doors are made with an aluminum extruded frame with a radius to match the enclosure for aesthetic appeal.

Lexan doors have a smoked polycarbonate resin thermoplastic panel that does not break like acrylic panels do and allows the customer to see the equipment in the enclosure and view the operational lights on the equipment. Clear Lexan is an option as well.

Steel Perforated Door

Steel Perforated Door (SPDs) have a steel frame with a 63% open insert to allow for premium ventilation. 78% open available upon request.

Vented Steel Door

Vented steel doors have a vent pattern at the top and at the bottom of the door. Each vent pattern has a removable air flow panel to allow you to control where the air enters or exits the enclosure.

Vented Doors are a cost effective way to close up and secure a cabinet when minimal ventilation is required.

Vented Lexan Door

Vented Lexan Doors are made with an aluminum extruded frame with a radius to match the enclosure for aesthetic appeal and a vent panel all around the door.

The smoked polycarbonate resin thermoplastic panel does not break like acrylic panels do and allows the customer to see the equipment in the enclosure and view the operational lights on the equipment.

The vent panel around the Lexan allows some air to flow through the front door

Solid Steel Door

Solid steel doors are the most cost effective way to secure an enclosure when front and rear ventilation is not required.

For secure and ventilated solutions, solid steel doors offer a quality addition to your server rack mount enclosure at a low cost.

Aluminum Perforated Door

Aluminum Extruded frame door that has a 63% perforated open area and are used when high ventilation and cooling is required. These doors have a very nice aesthetic appearance with a rounded frame to match the enclosure frame radius



For Part Numbers Please Contact Us at
sales@martinenclosures.com or 603.474.2626

All Doors come with a standard lockable swing handle latch and lift off left hand hinges as a default, right hand hinging available.

Door Handle Options



Swing Handle Locking Latch

The basic swing handle locking latch requires a key for entry. All standard enclosures are shipped with the 333 key. For colocation facilities the swing handle locking latch can be outfitted with a different key for each locking latch and if required, and may have a master key for all latches.



Combination Lock

Combination locks do not require a key, only a 3 digit access code to gain entry. Good for colocation facilities where multiple clients use the data center and everyone has access to his or her own cabinet or bay. The combination locks have a key override for facilities managers to gain access if required.



Powerless Security Lock

High security lock that supplies its own power whether there is power in the data center or not. It uses movement of the handle by the user to generate power to allow the user to enter a code and open the door. Valuable when a key is not desired and access codes are preferred.



Remote Monitored Smart Lock

With increasing number of data breaches and compliance regulations, the Smart Lock will provide your data center with the scalable and granular rack level access control needed to exceed all current industry standards.

Remote monitored smart locks are used to secure and monitor server racks – whether in large data centers or individual data racks. Access control takes place either directly on the handle via PIN code, via transponder card, or centrally, via a management system. The handles are part of an integrated system solution for controlling access.



Fingerprint BioLock

A biolock solution represents the cutting edge of what is available in the industry. A fingerprint cabinet lock system can help you protect your data assets with ease.

Fingerprint solutions ensure that a worker always has his or her keys on hand, making it much easier to adjust authorizations – you only need to change credentials to the lock, you don't need to give users a new key card.

This system can store prints for up to 10 fingers per user, and you can set specific fingers aside for quick authorization during emergency situations.

Cable Management

Cable Management Rings (CMRs)

Cable management rings (CMRs) make it easy and simple to secure and organize cables within the enclosure. The design configuration allows cables to go into the cable management rings easily and helps to prevent the cables from falling out, providing a neat and clean look for the enclosure cable management.



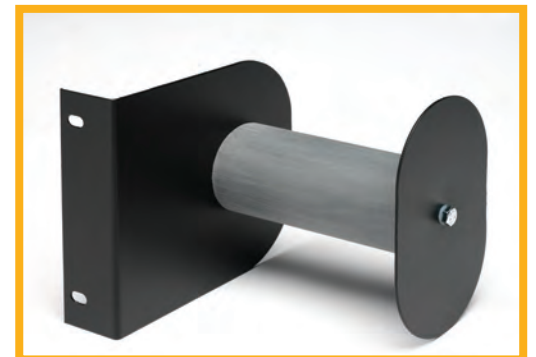
Fiber Rings

Fiber rings are designed to organize and help keep fiber runs from kinking and bending when they are run through the enclosure.



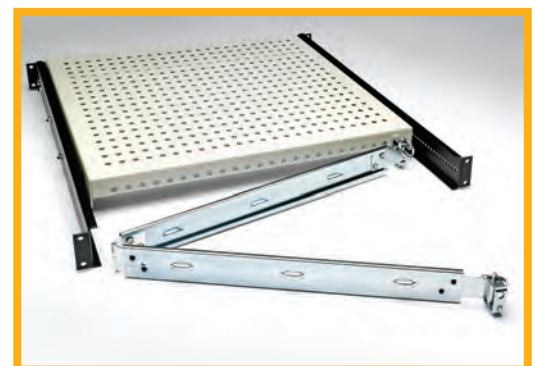
Cable and Fiber Management Spools

Cable and fiber management spools have a large radius to help fiber and copper cables be routed to various locations in and out of the enclosure and to and from equipment to help prevent damage to cables due to kinking and sharp bends.



Cable Management Arms

Martin offers two types of cable management arms for the rear of sliding shelves, drawers or keyboard trays: Plastic Cable Management Arm for light weight cables and Steel Cable Management Arm for heavier applications.



Cable Channels, Wire ways, and Cable Troughs

Cable channels, wire ways & cable troughs provide the ability to manage and contain wires and cables coming to and from the enclosure.

Wire ways can be incorporated in the base as a wire way base to keep power runs out from underneath the raised floor.

Cable troughs can be added on top of the cabinet and attached to the top panel to allow wires and cables to run directly on top of the enclosure and drop directly into it instead of on costly ladder racks.



***Pictured Martin Signature Wireway Top Panel**

These two features allow enclosures to be added on the end of the row very easily and cost effectively. Vertical cable channels can be incorporated inside the enclosure or on the outside if desired.

Features

- Multiple sizes, height, width and depth
- Configure to customer specifications
- Channel doors or no doors
- Velcro, cable rings, fiber rings, fiber spools can all be added into the troughs or wire ways
- Water fall entry with radius optional
- Brushed entry optional
- End caps for the end of the row
- Grommeted cutouts optional



***Pictured Velcro Saddles mounted to VSB**

Velcro Saddles

Velcro Saddles provide an easy and versatile way to organize cables. The saddles are made up of a 8" piece of Velcro that is formed into a loop. The saddles are typically mounted to a Vertical Support Bar (VSB), or can be mounted in numerous other places.

Panels

Side Panels



Standard Externally Removable Side Panels

Side panels are used to enclose the cabinets on one or both sides. Standard side panels come externally removable



Quick Release Side Panel

Quick release side panels require no tools for entry and are available with or without locks.



Internally Removable Side Panel

Internally removable side panels are mounted to the cabinet frame from the inside, which adds an increased level of security as it is not easy to take apart and gain entry from the outside of the server enclosure

Bottom Panels



Bottom Panels come in two styles, Solid and Perforated. The Bottom Panels are available with or without sliding Cable Access doors. The Cable Access Doors allow wires and cables to enter the enclosure from the bottom of the enclosure through the base. The Cable Access Doors come with open cell foam on each side of the opening to close off the area around the cables once the Cable Access Door is closed.

Filler and Cable Access Panels



Filler panels or cable access panels are generally used to fill up rack space where equipment is not mounted in order to keep the cool air in the front of the cabinet from traveling around the equipment that the cool air is intended for.

Top Panels



Solid Top Panel

Solid top panels are a basic top that is used when cable access or ventilation through the top of the enclosure is not required.

The solid top panels can also come with two cutouts, grommet, and cover plates for an option of running cables through a solid top.



Perforated Top Panel

Perforated top panels are made of 63% open perforated steel material that allows the inside hot air that rises to the top of the enclosure to exit, helping to keep critical equipment cool.

The perforated top panels can also come with two cutouts, grommet, and cover plates to have the option of running cables through the perforated top.



Fan Top Panel

Fan top panels provide a cost effective way to cool or assist in cooling an enclosure by exhausting the hot air that rises to the top of the rack keeping equipment cool and not blowing the hot air into an aisle.

Fan top panels come in a wide variety of configurations from 105 cfm to 1605 cfm. They can be configured with (1-9) 105 cfm fans or (1-3) 535 cfm fans. Fan tops can come in either 115v or 230 volt versions.



Brushed Cable Entry Top Panel

Top panels with brushed cable entry cutouts are designed to keep the airflow going in the right direction (front to rear) while allowing fiber, cables, and cords to enter or exit the enclosure.

The nylon brushes also help to keep dust out of the enclosure.



Pagoda Top Panel

Pagoda top panels are designed to keep dripping water out of the enclosure. In a situation where a building sprinkler system activates, it would keep the sprinkler water out of the enclosure to protecting vital equipment.

Pagoda Top panels can be designed to fit most Martin Enclosures.

Shelves

Fixed Shelves

Fixed Shelves are used to place equipment on when mounting to the Vertical Mounting Rails (VMRs) is not required, or they are also used to support heavy equipment that is mounted to the VMRs.

They are mounted to the front pair of VMRs and a rear pair of VMRs. Each shelf can be adjusted by 6" to accommodate the different distances between the front pair of VMRs and the Rear pair of VMRs.

- Rated at 250 lbs. evenly distributed
- Made of 14 ga. Steel
- Powder coated Black (BK01)
- Mounting adjustment range front to rear is 6"



Sliding Shelves

Sliding Shelves are designed to mount to the front and rear Vertical Mounting Rails and be able to fully extend with a load capacity of 100 lbs. making it easy to service, install, or cable equipment.

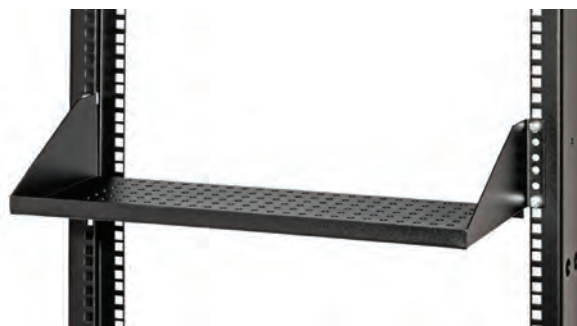
- Rated at 100 lbs. fully extended
- Made of 14 ga. Steel
- Powder coated Black (BK01)
- Adjustable mounting brackets for different front to rear rail spacing
- Standard with rear cable management arm (PCR-175)



Cantilever Shelves

Cantilever Shelves are designed to mount on only one pair of vertical mounting rails typically on a Telco rack or 2-post rack.

They can mount off of the front of the rack or the rear of the rack or both front and rear creating one long shelf by adding (-C) at the end of the part number.



Keyboard Trays and Drawers

Keyboard Trays

Keyboard trays come in three different widths 19", 23", and 24" mounting and four different styles. They all have a light weight cable manager on the rear that can attach to the rear vertical mounting rail or the frame.

Options Include swivel keyboard base, slide out mouse pad, and



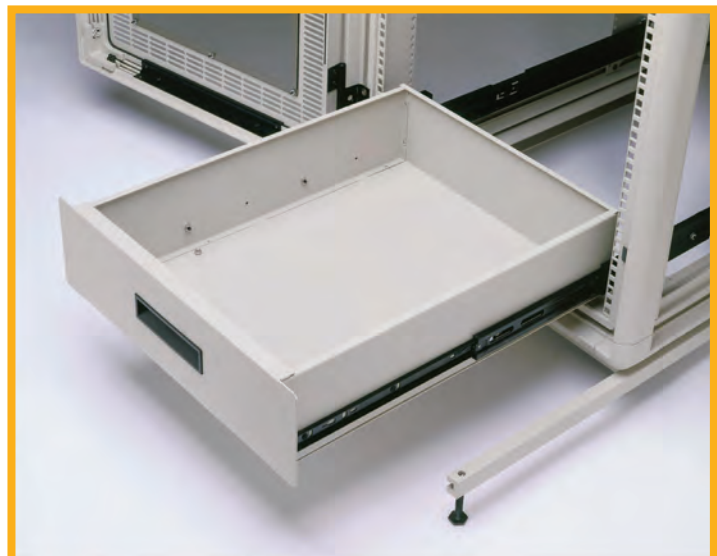
Drawers

Utility Drawers come in (3) standard sizes, 3U, 4U, & 5U. The drawers can be supplied for 19", 23". and 24" rack mounting.

Utility Drawers are designed to hold items such as documentation, tools, instruments, or lap tops. Drawers are mounted on slides for easy access.

Features

- Utility Drawers are 21" deep
- Drawers are mounted on slides for easy access
- Rated at 100 lbs. Fully extended
- Made of 16 ga. Steel
- Extends 20"
- Flush pull handle
- Powder coated
- Drawers can be supplied with a lock
- Lockable tops can be added
- Cable Management arms are available for the rear of the drawer
- Customization upon request



Additional Accessories

Hardware Kits

Hardware kits are included with every enclosure, wall mount, telco rack, and table top. They can also be ordered separately if additional desired.



Anchor Kits

Anchor kits are used to secure an enclosure to a raised data center floor or to a concrete floor when required.

Picture shown is specifically designed for raised data center floor.



Reducer Brackets

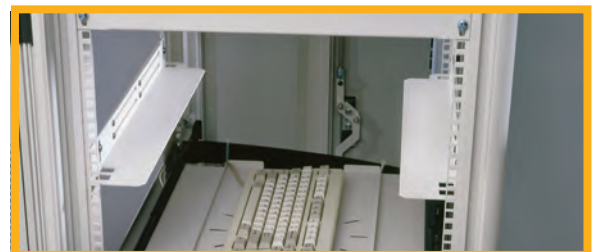
Reducer Brackets are used in wider enclosures that have 23" or 24" standard EIA mounting patterns in order to reduce the 23" or 24" mounting pattern to the standard 19" EIA pattern when installing a piece of equipment that requires the 19" mounting.



Angle Brackets

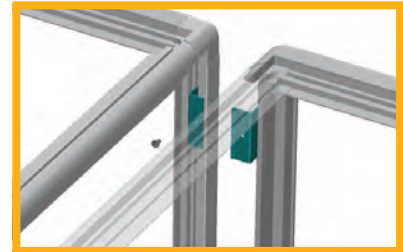
Angle Brackets are used to support equipment using the minimal amount of rack space which allows the customer to maximize the rack space in an enclosure.

- Made of 12 gauge steel
- Front to rear mounting is adjustable by 6" to allow vertical mounting rails to be placed in various positions
- Uses minimal rack space
- Allows for vertical air flow
- 200 lb. load rating
- Caution is to be exercised when loading equipment onto angle brackets to assure equipment does not slip between angle brackets since angle brackets do not span the entire width of the rack area



Joining Kits

Joining kits are used to securely attach enclosures that are in a row to each other which makes the enclosures a little more stable and assists in making the row of enclosures straight and orderly. The joining kits come in two variations, Internal and External.



U-Labels

U labels are available in any cabinet or rack with vertical mounting rails. Option of have #1 start at the top or bottom.



Anti-tip Stabilizers

Anti Tip Stabilizers bolt onto the side of our standard base and are 100% retractable.

Anti Tip Stabilizers bolt onto the side of our standard base and are 100% retractable.

- Fully retractable
- Made of light weight 6061-T5 aluminum extrusion and levelers
- Provides a safe way to extend a sliding shelf with heavy servers or switches on them when cabinet is not bolted to the floor
- Other bases can be modified to accept the Anti Tip Stabilizers upon request
- Can be installed on front or rear of the enclosure or modified to do both
- Slide out, adjust leveler and ready to go.

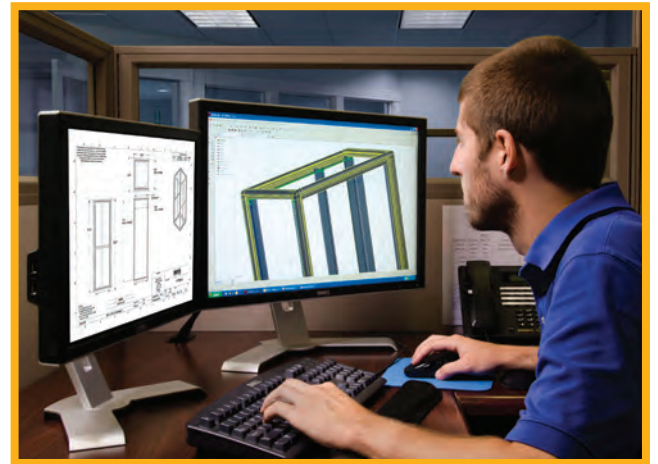


Engineering Design Services

To serve our customers better, Martin International Enclosures offers custom engineering design services to meet and exceed your needs and expectations. When off the shelf and modified standard don't fit the requirements, we work closely with you to engineer and design a custom product.

Steps generally include:

- Defining the problem
- Specifying requirements
- Creating potential solutions
- Choosing the best solution
- Designing and building a prototype
- Testing the prototype
- Production planning
- Production



Additional Services

We strive to satisfy the needs of our customers, no matter how specific. Martin Enclosures' offers a wide variety of additional services. Martin Enclosures offers a wide variety of services to accommodate every customer requirement.

- **Private Labeling** - For customers who wish to package their products in Martin enclosures and resell the complete solution under their own brand.
- **Silk Screening** - Designations on panels, power strips or customers names on a cabinet or enclosure.
- **U Labeling for Vertical Mounting Rails** - U labeling each rack unit on a vertical mounting rail to make it faster and easier to mount equipment and assure it is equidistant from the top or bottom, to keep it level without counting holes.
- **Installation** - Martin can install the equipment when customers do not have qualified personnel to do the job properly.
- **Local Delivery (Our truck)** - When feasible, we prefer to deliver personally with white glove service to eliminate the possibility of damage by common carrier.
- **Shipping Crates** - Crates are designed and built in house for the particular size of enclosure that goes into it in order to provide better protection against shipping vibration and damage. - Shipping crates come with a door that doubles as a ramp to roll the cabinet in and out of the crate. Crates have cushion foam on the interior to support and cushion cabinet during transit. Crates can either have a standard wood pallet base or a cushioned pallet to absorb more of the vibration during transit. Shipping crates are designed to be reused by the customer 2-3 times Heavy duty crates can be made for extreme cases such as reusing many times



Martin Enclosures' Facility



Martin Enclosures' 60,000 sq/ft high performance manufacturing facility is located in Seabrook, NH, just 1 hour north of Boston. Some of our in house manufacturing capabilities include a brand new machining center, multiple powder coating lines, electrical assembly, and a precision Amada punching and forming center.

Quality is heavily focused on at Martin, and we pride our management system certified as being in conformity with ISO 9001:20015 standards.



Contact Us



**Call Today to Design
Your Enclosure Solution**
603.474.2626



**Email Us
With Any Questions**
sales@martinenclosures.com



**Visit Our Website
to Explore Our Products**
www.martinenclosures.com

martin

INTERNATIONAL ENCLOSURES, INC.

14 Woodworkers Way Seabrook, NH 03874

Tel: (603) 474-2626 Fax: (603) 474-1881

www.martinenclosures.com

Email: sales@martinenclosures.com

